



Warrnambool
COLLEGE

TRANSITION BOOKLET 2027

RESPECT • RESILIENCE • RESPONSIBILITY

WELCOME



Our Principal Team: Dan Lee, Jodi Rechsteiner, Jen Penn, Emma Vesey, Gault McCluggage and Dave Clift

**AT WARRNAMBOOL COLLEGE
WE STRIVE TO BE THE BEST
VERSION OF OURSELVES;**

**TO DREAM MORE, TO BE
MORE, TO DO MORE.**

For us, learning doesn't just happen in classrooms. It's crafted by a community that inspires the drive to engage in opportunities, to work hard and to embrace challenges, whatever shape they may take. We want to discover something we can change every day, because it means that we haven't stopped looking for ways to grow.

Warrnambool College acknowledges the traditional custodians of this land upon which we learn. We pay our respect to the elders past, present and future within the Maar Nation. We appreciate that diversity encourages learning and we recognise the need to be flexible, inclusive and proactive. We know that finding the pathway to achievement takes grit as well as the imagination to keep looking towards new possibilities. If we're reaching our goals then our staff, our students, together with our community will be working to build the skills they need to be successful today and to redefine tomorrow.

We won't be working for you but with you – with students, with families, with employers and employees, with educational providers, with our region and our world.

IT IS THROUGH RELATIONSHIPS THAT WE'LL
BE ABLE TO CHOOSE A FUTURE WHERE...

EVERY WARRNAMBOOL STUDENT THRIVES.

THE WARRNAMBOOL COLLEGE WAY

At Warrnambool College, we believe that every young person deserves the opportunity to succeed. Our vision for learning places students at the centre of every decision we make. We are committed to understanding and responding to each learner's unique needs, inspiring them to become motivated, capable and lifelong learners.

This commitment is grounded in the noble cause that every Warrnambool student thrives and it begins with high-quality, evidence-based teaching in every classroom.

THE FOUNDATION OF OUR APPROACH

Our curriculum and assessment approach is guided by the Victorian Teaching and Learning Model 2.0 (VTLM) which provides a research-based framework for how students learn best and how teachers can support their learning. Drawing on these evidence-based practices, each Key Learning Area remains responsive to student needs through a focus on what students learn, how they learn it and why it matters.

We embed strategies that help students build attention, focus and memory - supporting students to achieve mastery over time and apply their learning in real-world contexts. In our classrooms, all teachers ensure that their learning programs:

- Manage cognitive load.
- Activate prior knowledge and model new content.
- Provide opportunities for practice, feedback and reflection.
- Foster self-regulation in a positive, inclusive learning environment.



FUTURE-FOCUSED & CONNECTED LEARNING

Across multiple year levels, we emphasise interdisciplinary learning - supporting students to make connections between concepts, transfer knowledge across subjects and apply their understanding to authentic, real-world challenges. This approach deepens engagement, promotes creativity and critical thinking and builds learner confidence.

We are committed to offering all students opportunities that reflect their interests, goals and potential. To support this, we offer a range of learning pathways that:

- Provide flexible subject choices and voice in learning.
- Promote a growth mindset and academic perseverance.
- Strengthen targeted support for learners who require it.
- Extend high-performing students through enrichment and acceleration.
- Embed wellbeing, personal development and resilience in everyday learning.
- Build partnerships with industry and training providers to create real-world pathways.

KEY DATES for 2027 enrolments

PLEASE KEEP THIS HANDY FOR A QUICK GUIDE

**Small group College tours are available Tuesdays and Thursdays:
31 March; 21, 23, 28, 30 April; and 5 May.
Bookings through the College office on 5564 4444**

TERM 1

Monday 23rd March

Warrnambool College Open Night
4:30pm to 7:00pm

Monday 30th March

SEAL Information session 6:00pm
in the College Auditorium.

SPP Information session 6:30pm
in the College Auditorium.

Tuesday 31st March

SEAL & SPP applications open.

TERM 2

Friday 8th May

Year 7 applications for 2026 placements
to government primary schools.

Non-government primary student applications
to be returned to Warrnambool College.

Wednesday 24th June

Government primary schools to inform
Year 7 parents of placement.

Tuesday 25th June

Welcome letter sent to all students offered
a placement at Warrnambool College.

Scholarship applications open.

TERM 3

Friday 24th July

SEAL & SPP applications close
Scholarship applications close.

Monday 10th August

SEAL testing from 9:00am to 1:00pm
onsite at Warrnambool College.

Friday 28th August

SEAL and SPP offers finalised.

TERM 4

Monday 26th October

Year 7 Transition Information Night
6:00pm at Warrnambool College.

Monday 7th December

Small School Orientation Day.

Tuesday 8th December

State-wide Orientation Day.

Friday 18th December

Last day term 4.



Warrnambool
COLLEGE

CONTENTS

- 1 Welcome
- 2 Key Dates for 2027
- 4 Teaching & Learning at Warrnambool College
- 16 SPP & SEAL Programs
- 19 Our Academies
- 21 Connection to The Arts
- 22 Indigenous Community
- 25 Our Values
- 26 School Wide Positive Behaviour
- 28 Instructional Model
- 33 Connected & Inclusive
- 34 Cultural Diversity
- 37 Student Wellbeing
- 38 Uniform Policy
- 40 Compass - Online Communication
- 41 iPad/MacBook Device Requirements
- 41 Bus Transport to School
- 42 Costs at Warrnambool College
- 44 Warrnambool College Scholarships
- 45 Scholarship Application Form
- 47 Instrumental Music Hire
- 48 Extracurricular Activities

TEACHING & LEARNING

at WARRNAMBOOL COLLEGE

YEAR 7 OVERVIEW

Our Year 7 program is built on fostering strong connections — to school, to peers and to self. Our year level structure enables core teachers to play a central role in students' day-to-day learning and wellbeing. Homeroom provides each student with a consistent core teacher who builds genuine relationships with both students and families. At the same time, our Year 7 team works collaboratively across all classes to develop a strong, positive culture throughout the entire year level.

Year 7 students are supported to develop their organisational skills, as well as their independent learning skills; Warrnambool College places a high value on formative assessment supporting students to understand their learning progress with engaging and active learning routines.

Year 7 students use iPads (or MacBooks) and continue to develop their ability to incorporate digital technologies into their learning. Learning at Year 7 focuses on a range of core subjects including English, Mathematics, Science, Humanities, Physical Education and Health, Visual Art, Product Design, Music, Drama and Language (either French or Indonesian). Major events at Year 7 include the Student Transition Program, Year 7 Camp and a range of incursion experiences. Developing strategies for positive wellbeing is prioritised through weekly Big Life sessions, academies, leadership opportunities and array of wellbeing incursions around self-esteem, positive relationships, mental health and more.

CAMP INFORMATION

Camps aim to create connections, a sense of belonging and opportunities to find success in challenge. In 2026 our Year 7 camp went to Silverband Lodge in Halls Gap for three days. Students took part in activities including mini golf, giant swing, abseiling and bush walking.



YEAR 7 TRANSITION PROGRAM

We believe it is important to provide Year 7 students with opportunities to feel comfortable in a new environment and to give them the time and support needed to settle confidently into secondary school.

Our Transition Program includes:

- Understanding the structure and routines of the school day.
- Building connections and friendships.
- Becoming familiar with the school environment.
- Developing help-seeking skills.
- Learning to use Compass and school IT systems.

While these foundations are introduced in the first weeks of school, they are revisited and reinforced throughout the year to ensure every student feels confident and supported.

LITERACY AND NUMERACY

Warrnambool College believes literacy and numeracy are the cornerstones for academic success throughout life. Additional classroom support is provided to teachers and students from Years 7 and 10 and plays a vital role in the school. Year 7 and 8 English and Maths classes often have additional staff members providing targeted instruction. Literacy and Numeracy intervention programs are also integrated into the Maths and English classes to support students of all academic abilities. This ensures all students receive the support they need to thrive and grow.



YEAR 7 CORE COURSE INFORMATION

The aim of Warrnambool College's curriculum at Year 7 is to provide students with a balanced, broad education and to assist them in making a smooth transition from Primary to Secondary school. The school year is divided into two semesters, with some subjects being semester-long and some running for the full year.

ENGLISH

All students undertake a common course in English. Students learn to analyse a range of texts including plays, short stories, non-fiction, poetry and film. They build a foundation of analytical skills and a critical understanding of the ways writers and speakers control language to influence their listeners, readers and viewers. Writing, reading and language skills are built through text study, narrative writing, language analysis and media analysis. Student agency is incorporated into the differentiated "Fully Booked" independent reading program and students use "Writing Traits" workbook conventions.

"I enjoy doing experiments in Science, they are always fun and interesting."

– Jack, Yr 7

MATHEMATICS

The Mathematics program aims to ensure that students can develop useful mathematical and numeracy skills for everyday life and can apply mathematical concepts, skills and processes to explore and solve numeracy problems in a variety of contexts. Activities are designed to develop students' mathematical understanding, fluency, reasoning, analytical thought and problem-solving skills. Our teaching and learning model provides engaging and personalised learning targeted to the needs of each child, with tasks designed to incorporate differentiation and critical thinking. The curriculum focuses on developing mathematical understanding in the areas of Number and Algebra, Measurement and Geometry and Statistics and Probability.

SCIENCE

The Science course introduces students to basic scientific concepts and practices. Students learn science skills such as how to do fair experiments and how to work safely in the laboratory. Students also study topics including mixing and separating, water as a resource, ecosystems and classification, force and space. In Year 8, students study topics which include consumer science, cells of life, systems for survival, matter, chemical reactions, geology and renewable and non-renewable energy.

TEACHING & LEARNING

at WARRNAMBOOL COLLEGE

“PE is my favourite subject. I think it is really important to learn new skills and ways to stay healthy.”

– Bella, Yr 7

HEALTH & PHYSICAL EDUCATION

The areas of Health, Physical Education and Sport are all covered to develop students’ understanding and skills within each discipline. Health focuses on physical health and development, nutrition, problem solving and making informed decisions about personal health. Physical Education develops motor skills, strategic thinking and tactical knowledge through the introduction of games, athletics and fitness. Students learn to identify factors that influence their motivation to be physically active. Sport Education aims to deliver extensive opportunities for all students to experience a wide variety of sporting and recreational activities.

LANGUAGES

An introductory course in each of French and Indonesian is taught in Year 7. At the end of Year 7, students are required to choose one language for further study – French or Indonesian. At Warrnambool College we use a communicative approach to language study, combining listening, speaking, reading and writing skills that focus on everyday life situations.

The students develop language understanding while exploring and celebrating cultural diversity. Year 7 topics covered in Indonesian and French include greetings, numbers, family, colours, food and culture. In Year 8 students build on these foundation skills and improve their language proficiency and cultural understanding.

HUMANITIES

Year 7 Humanities incorporate the four disciplines of History, Geography, Economics and Civics and Citizenship. The disciplines are introduced and explored through various topics. Students are encouraged and guided to develop their understanding of each discipline and how they are interconnected. Students start to question different views of history before they look in depth at the ancient civilisations of Greece, Rome and Australia. Students investigate the qualities and values of Australian of the Year recipients, build mapping and timeline skills, reflect on the importance of water for humanity’s survival, and investigate why people choose to live where they do. We aim to develop empathetic global citizens.

DIGITAL TECHNOLOGIES

The aim of Digital Technology is to develop students practical programming skills by developing their own digital solutions, achieved through a range of projects that include coding in a text based programming language, data modelling, data analysis, robotics and electronics. Students develop the necessary skills to use digital technology efficiently, effectively and responsibly across all learning areas. These are essential skills for success in the 21st century.

PRODUCT DESIGN

In Year 7 Product Design Technology (Wood) is designed to engage students with interesting and creative activities, introducing skills for decision-making and construction. Students learn about working with mainly wood to design and make individual products. In Product Design, students learn about the design process, use a range of tools, equipment and techniques in order to process materials into products, whilst considering ecological and environmental factors. A key focus is the importance of working in a safe manner.

“I really like Product Design because you get to design and make things.”

– Oska, Yr 7

VISUAL ARTS

The Arts at Warrnambool College provide students with the opportunity to express themselves creatively. Through the performing arts and visual arts, students challenge themselves to respond to new ideas and develop knowledge of other people, places and time periods. They learn creative, critical and reflective thinking skills through the analysis and interpretation of their own and others' ideas, engaging their minds to interpret their own reactions to new and innovative ideas, techniques and mediums. The Arts allows students to express and explore creative concepts, develop communication skills and build confidence in themselves and their ideas.

"I love Drama and Music because I can express myself and be creative. When I'm older I would like to be an actor."

- Elsie, Yr 7

PERFORMING ARTS

As part of their core subjects students learn the performing arts disciplines of: Drama and Music. Students also have the option of studying Instrumental Music and are encouraged to join the extensive band program. These subjects expose students to a range of creative opportunities and enable personal expression to build confidence. Students who find a passion for these subjects have the opportunity to pursue this passion throughout their schooling experience.

FOOD STUDIES

Food Studies introduces students to the basics of food hygiene and safety, nutrition and food preparation. Food Studies gives students an insight into the food they eat and the choices they make as valuable life skills. Students then have the opportunity to put this into practice by developing their own cooking abilities to demonstrate skills and knowledge while working in a safe manner.

REPORTING AT WARRNAMBOOL COLLEGE

The ability to provide feedback to parents/guardians and students on learning progress in a timely manner is imperative to ensure that students learn from their mistakes and demonstrate improvement.

As a result, reports are completed SIX times per year and are accessible in the Compass online learning management system. In these reports teachers utilise set rubrics to assess students "Attitude and Effort" and "Academic Achievement" across all subjects, enabling comparisons to be made between subjects and cycles.

At Warrnambool College we believe that by emphasising the value of students' "Attitude and Effort" towards their learning, we are able to improve their academic outcomes.

We share regular updates on your student's progress through our Pulse emails. These are emailed to families twice a term between report cycles. The Pulse is a snapshot providing feedback on learning tasks and assessments completed in the cycle. The Pulse also shares individual student attendance, overdue assessments, at risk of an N, positive reward points and minor behaviours addressed at school.

Parent/Student/Teacher Conferences follow report cycles and offer a formal way to discuss student progress. Interviews occur four times throughout the year following report cycles 1, 2, 4 and 5.

**WHEN WE ALL WORK
TOGETHER FOR OUR
STUDENTS, WE HAVE
STRONGER OUTCOMES.**

YEAR 8 OVERVIEW

Whereas students in Year 7 focus on building connections within their new learning community, Year 8 students focus on the impact that they can make on the lives of others. As active members of the community, students participate in activities that nurture the attributes of successful learners and community members.

Students in Year 8 have more agency with their learning as they select elective subjects each semester, in addition to the core subjects. The aim of the Year 8 curriculum is to continue to offer a broad range of subjects, allowing students the opportunity to experience all key learning areas and enabling students to make informed choices in later years. Core classes include Maths, Science and Physical Education; Elev8 is the combination of English, Humanities and Health.

Students' elective choices include Art and Design, Drama, Product Design, Music, Food Studies and Digital Technologies. Major activities at Year 8 include the Elev8 Program, Academies, Sport and much more, with an emphasis on civics and pathways education. Students also engage in a range of wellbeing programs, supporting students to use digital technologies responsibly as a respectful 'digital citizen'.

SPP students are now integrated into core classes, with SPP replacing PE classes.

SEAL classes are exclusive and their elective profile comes from Year 9 offerings as part of their accelerated program.

"I really enjoy Elev8 classes as we learn about interesting topics and have choices in the projects we do."

– Olivia, Yr 8



ELEV8 Integrated Learning of English, Humanities and Health

Elev8 is a concept and inquiry-based classroom program which integrates multiple curriculum areas: Health, English and Humanities. Catering to the needs of the modern learner who can often feel disconnected from traditional modes of teaching and learning, Warrnambool College recognises the changing world around us and the need to prepare our students by building the knowledge and skills required to adapt to our ever-evolving world.

The Elev8 program is focused on preparing our Year 8 students for a lifetime of learning through a combination of facilitation, explicit skill teaching and project-based learning which aims to address the specific needs of our students. The program also looks holistically at students as lifelong learners through engagement and connection, enabling them to continue to grow and challenge themselves. Students will gain skills that will translate into their lives now and into the future beyond Warrnambool College.

THE PROGRAM IS BASED ON THREE FOUNDATIONAL IDEAS:

- **WHO AM I?**
- **HOW AM I CONNECTED TO MY COMMUNITY?**
- **HOW CAN I ACTIVELY PARTICIPATE IN CREATING A BETTER WORLD?**



YEAR 9 OVERVIEW

Year 9 is an important year in which students prepare for the transition to Senior School. Students are provided with purposeful opportunities to reflect on the contribution that their junior school experience has made to their personal growth. They are supported to continue in their journey to become independent learners and creative thinkers.

Highlights for Year 9 students include a focus on the Industry Connections Program and the Careers Pathway Inquiry Experience, as well as their Morrisby 'My Career Insights' assessment and interview. Both of these experiences support students to develop an understanding of, and to reflect on, their future pathways. The Year 9 Melbourne City Camp is also a valuable learning experience and much enjoyed highlight for students.

Year 9 students continue to study English, Mathematics, Science, Humanities and Health and Physical Education as core subjects, but also choose from a wide range of elective subjects.

SPP students are now integrated into core classes, with SPP replacing PE classes.

SEAL students select their elective subjects from the Year 10 program as part of their accelerated program.

"We have a wide choice of electives, which helps you know what subjects you enjoy."

– Isaak, Yr 9

PHOENIX Integrated Learning of English, Humanities and Health

The program is designed around developing students' sense of place and inquiry-based skills. Units in Phoenix include Health and Healthy Relationships, History, Geography, Sustainability, Work Environment, and English (reading and responding to text, writing traits, oral and written presentation, and communication).

In Term 2, the Industry Connection Program engages students in an Inquiry-Based Project where they present solutions to problems posed by local industries. Students research the problem and industry, develop questions for mentors, and complete industry tours to gain insight. Mentors provide feedback to support students' practice presentation pitches at school.

Students have been highly engaged, developing employability skills such as Communication, Critical Thinking, Digital Literacy, Problem Solving, and Teamwork, while exploring seven local organisations and multiple job opportunities in Southwest Victoria. The program has boosted students' aspirations for their senior years, increased awareness of career pathways, and provided practical experience with resumes, cover letters, interview techniques, and tours of SW TAFE and Deakin University.



YEAR 10 OVERVIEW

The Year 10 program at Warrnambool College is completely elective based and aligned with the Victorian Curriculum. Warrnambool College offers great variety in the subjects for selection supporting a solid core of learning providing the necessary preparation for the VCE years. Whilst all subjects are elective based, there are minimum requirements for participation in core subjects. Humanities and Science classes must be selected with choices made in line with subjects students are wanting to pursue in senior school VCE. Additionally, English and Maths classes are streamed: Advanced, Core, or Foundation English; Advanced, Core, or Foundation Maths. These choices will impact VCE subject choices the following year.

Students demonstrating the necessary skills are able to accelerate their learning by commencing their VCE studies or undertaking a VET subject. During the year students have the opportunity to take part in Work Experience. Students will receive considerable direction in choosing senior school subjects to support potential further training and careers in their classes.

The challenge for students is to use their time in Year 10 to develop a broad range of skills and to develop their literacy and numeracy to the highest levels possible in preparation for the years to come. Extracurricular activities such as sport, music and our Academies provide opportunities to expand their skills.

Year 10 is the year to demonstrate increased maturity by forming positive working relationships with teachers and working cooperatively with peers.



Further information is available on the Subject Prospectus on the College website via QR code.

“My elective choices in Year 10 will help me build the skills and knowledge for my university course and my future career.”

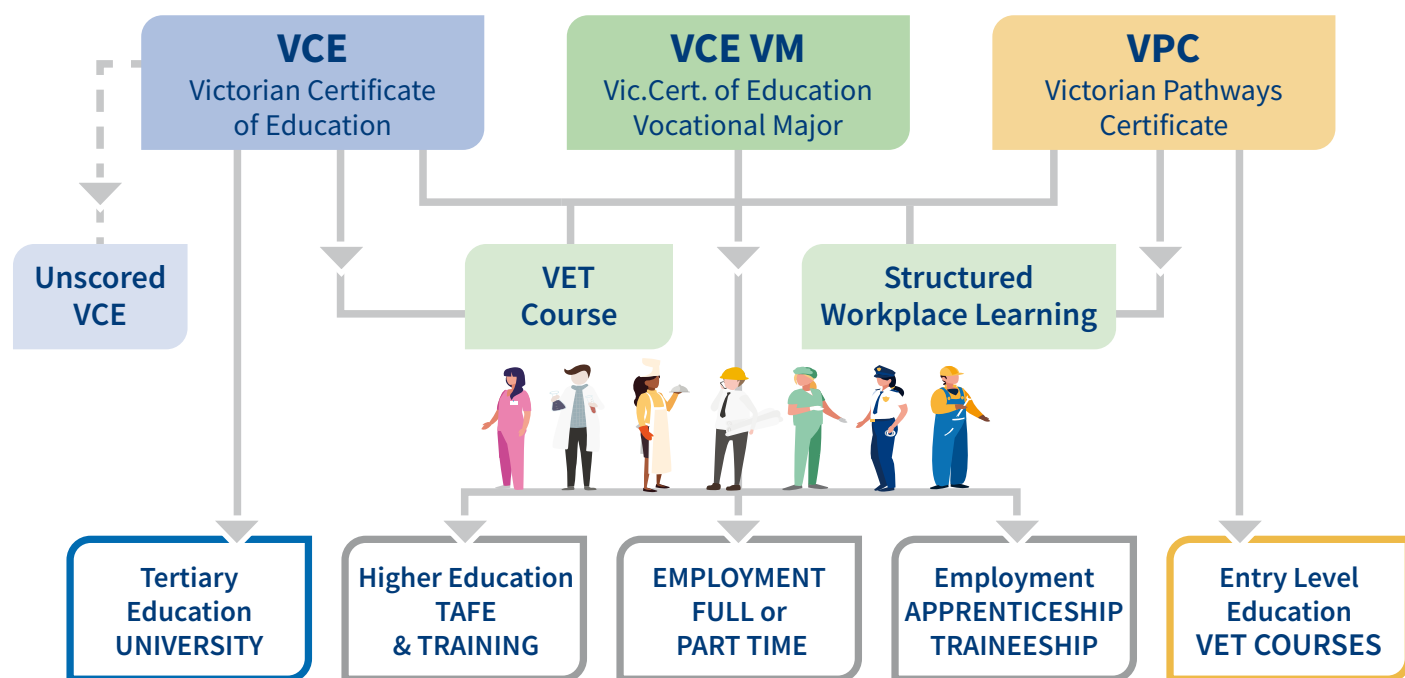
– Ashlinn, Yr 10



STUDENTS WILL
BE EMPOWERED
TO ASK,
CHALLENGE &
EXPLORE THEIR
OWN IDEAS, &
FOLLOW THEIR
OWN INTERESTS
THROUGHOUT
THE YEAR.

STUDENT PATHWAYS

at WARRNAMBOOL COLLEGE



SENIOR SCHOOL Pathways to VCE, VET and SBAT

At Warrnambool College we believe that student learning is an individual pathway, supported via a whole school approach. Students have the right to choose the individual pathway that best aligns with their strengths, interests and aspirations. To assist students we ensure we provide the support and guidance in relation to subject selections, career pathways and in attaining their future goals and ambitions.

Study is governed by the Victorian Curriculum and Assessment Authority (VCAA) which is responsible for the curriculum, assessment and reporting of both the Victorian Certificate of Education (VCE) and the Victorian Certificate of Education – Vocational Major (VCE-VM).



Further information is available on the Subject Prospectus on the College website via QR code.

YEAR 11

When starting their VCE program, the students at Warrnambool College select a total of six subjects, consisting of 12 VCE Units over the academic year. As required for the completion of VCE, students must study one English subject. The opportunity exists for Year 11 students to extend their studies by undertaking a VCE Unit 3-4 subject a year ahead, providing that certain selection criteria are met.

Students are also able to undertake the VCE Vocational Major (VM) program that incorporates vocational and applied learning that is completed over Year 11 and 12. This prepares students to move into apprenticeships, traineeships, further education and training, university (via non-ATAR pathways), or directly into the workforce. As required for the completion of VCE VM, students must complete units in English, Maths, Work Related Skills and Personal Development Skills, alongside a choice in some VET and VCE units.

Co-curricular programs in Year 11 include the Elevate Study Skills and Time Management sessions, Careers Expo and the Year 11 Formal. These programs aim at strengthening the students' sense of community and developing their aspirations towards future careers.



YEAR 12

In Year 12 VCE, students' study five subjects, including English, for a total of 10 VCE Units throughout the year. The ability to set personal goals, develop healthy and sustainable routines and prepare for examinations are essential skills that are addressed throughout the year.

Students undertaking the VCE Vocational Major program in Year 12 continue with their units in English, Maths, Work Related Skills and Personal Development Skills, alongside their choice in some VET and VCE units.

Co-curricular programs also include Year 12 Retreat, Elevate Study Skills, Tertiary Information excursions and sessions and the Year 12 Formal.

"Year 12 is challenging, but the support of friends and teachers is helping me persist and continue working hard"

- Layla, Yr 12

VCE REQUIREMENTS

Minimum of 16 Units which must include:
At least ONE Unit 1 & 2 from the English group (General &/or Literature &/or EAL)

You **MUST** pass English or Literature or EAL Unit 3 & 4
AND - Minimum of 3 other sequences of Units 3 & 4

- 1 Unit = 1 semester
- Unit 1 & 2 = Year 11 subject (6 subjects)
- Unit 3 & 4 = Year 12 subject (5 subjects)

VET Units can contribute to Unit 3 & 4 sequences

VCE VM REQUIREMENTS

Minimum of 16 Units total over two years
- Year 11 and 12

- 4 x Unit 3/4 sequences (one **MUST** be English)
- 3 x Units of English in total
- 2 x Units of Maths
- 2 x Units of Personal Development Skills
- 2 x Units of Work Related Skills
- VET 180 hours (this includes School -based Apprenticeship)

This pathway will not generate an ATAR in your final year. Thus direct university entry is not generally an option.

VPC Is only available after pathway interviews have taken place with students.

WARRNAMBOOL COLLEGE VCE & VCE/VM RESULTS 2025

88%
OF STUDENTS
RECEIVED A
UNIVERSITY
OFFER

85%
OF STUDENTS ARE:
Attending university
or TAFE, undertaking
full time work, or
have gained an
apprenticeship or
traineeship



CAREERS EDUCATION

- YEAR 7** BigLife 7CONNECT program - Connecting Interests to Industry in class sessions
- YEAR 8** BigLife NAVIG8 program – Career Bullseyes in class sessions
- YEAR 9** My Career Insights ‘Morrisby’ Profiling and DEAKIN ‘Future Me’ program = world of work and employability skills; ‘Try a Trade’ excursion SWTAFE.
- YEAR 10** DEAKIN ‘Uni Immersion Day’ = aspirations and opportunities; Regional Career Expo excursion; and an optional traditional work experience week.
- YEAR 11** DEAKIN ‘Future Ready’ program = pathways, wellbeing, and money moves
- YEAR 12** Tertiary Information Service (T.I.S) Event – a further study expo, Scholarships and SEAS ‘Special Entry Access Scheme’ support and one on one pathway advice

In addition to year level specific career activities, every student at Warrnambool College will complete an individual Career Action Plan and has the ongoing opportunity for one-on-one course and pathway counselling from our Careers and Pathways team.

STRUCTURED WORKPLACE LEARNING

Students in years 10/11/12 have the opportunity to access industry exposure by completing regular hours in the workplace through Structured Workplace Learning (SWL). Whilst SWL is a compulsory part of the VCE Vocational Major pathway, all students are welcome to work with the Careers and Pathways team, together with their completed Career Action Plan, to find a host employer that aligns with their interests. This is organised on an individual basis and requires careful consideration of student timetables, family preferences and employer needs.

/HEADSTART APPRENTICESHIPS AND TRAINEESHIPS

The HeadStart program has seen school-based apprentices and trainees thrive, enabling students to develop the skills and experience that employers value. Completed alongside a VCE, VCE Vocational Major or Victorian Pathways Certificate, the initiative offers students paid on-the-job training while providing employers with well-matched and highly motivated young workers.

From much favoured traditional trades to increased interest in agriculture and green energy, HeadStart lets students start learning skills for an apprenticeship or traineeship early – providing them with the real life knowledge that employers need, while continuing to complete their senior schooling.

With schools reporting strong retention rates and genuine employment outcomes post placement, HeadStart has now been expanded to include all government Secondary Schools across Victoria.

“I love that I can finish school and study a career I am passionate to pursue, whilst earning money.”

– Luke, Yr 12



Further information is available on our Careers website via QR code.



OUR SENIOR STUDENTS HAVE HIGH EXPECTATIONS & ARE COMMITTED TO LEARNING AS THEY WORK TOGETHER TO ACHIEVE THEIR GOALS.



SPORTING PATHWAYS PROGRAM

**WARRNAMBOOL COLLEGE
OFFERS THE ONLY
SPORTING PATHWAY
PROGRAM FULLY
EMBEDDED INTO THE
SCHOOL'S CURRICULUM IN
SOUTH-WEST VICTORIA.**

Our Sporting Pathways Program uses the passion of sport to engage and expand a student's learning opportunities at our school. The program involves partnerships with the Sports Science Faculty at Federation University – Ballarat campus, a range of elite local coaches and qualified fitness instructors and a strength and conditioning coach with a Masters qualification.

The program aims to develop the 'whole athlete' with a focus on applied science Strength and Conditioning Programs along with cardio enhancement sessions using the latest advances in fitness styles, techniques and equipment.

"SPP is such a great program, we learn so many things about sport and health and we get to do strength training too!"

– Max, Yr 7

All students involved in the program will complete a minimum of five sessions per week in the school's High Performance Centre. Students will also undertake sport specific training sessions that are scheduled before and after school. All sport specific training sessions will be conducted by elite coaches who have been very successful, and in some cases represented their sport at the highest level.

Students have the option of sports such as AFL, Netball, Basketball, Athletics, Swimming, Cricket and possibly even more (sports that run will be dependent on student numbers).

Additional costs are associated with the program.

Federation 
UNIVERSITY • AUSTRALIA



SELECT ENTRY ACCELERATED LEARNING (SEAL) PROGRAM



WARRNAMBOOL COLLEGE IS A FOUNDING MEMBER OF THE ACADEMY OF ACCREDITED SEAL SCHOOLS (TAASS).

THE COLLEGE HAS THE ONLY TAASS ACCREDITED LEARNING PROGRAM IN SOUTH WEST VICTORIA.

SEAL is a Program for the top academic 5-10% of students. Research has consistently documented that these students learn best when placed with their intellectual peers. Ability grouping with adjusted content and pace is the single most successful way of providing for the academic and social needs of gifted students.

The aim of Warrnambool College's Select Entry Accelerated Learning (SEAL) program is to enable gifted students to explore the depth and breadth in their learning, working alongside others who are also gifted. Challenging learning experiences are offered that are tailored to the needs of talented learners. There is a greater emphasis on higher order thinking and independent learning and research.

More information on the SEAL Academy can be found at sealacademy.org.au

Students enter the Program in Year 7, and thereafter students may select from a range of programs. Their curriculum is extended across Key Learning Areas where their higher cognitive skills allow rapid advancement: English, Mathematics, Science, Humanities and Languages. Year 10 SEAL students may undertake VCE subjects in place of Year 10 Core subjects in areas where they have excelled in Year 9. Students at Warrnambool College are eligible to study a wide range of VCE subjects

Grade 6 students whose families wish them to enter the Select Entry Accelerated Learning Program participate in a selection process which includes external testing and a confidential reference from the child's grade 5 or 6 teacher.

The only additional charge is the cost of the external test.

SEAL & SPP PROGRAMS

APPLICATION INFORMATION

2026 KEY DATES

- **Friday 24th July**
Last day for SEAL and SPP applications (including teacher references) to Warrnambool College.
- **Monday 10th August**
SEAL testing from 9:00am to 1:00pm onsite at Warrnambool College
- **Friday 28th August**
SEAL and SPP offers finalised.

SELECT ENTRY ACCELERATED LEARNING

Testing for the 2027 Year 7 Select Entry Accelerated Learning (SEAL) program at Warrnambool College will be conducted using the online resource Edutest.

The testing will involve 4 x 30-minute multiple-choice questions on Verbal Reasoning, Numerical Reasoning, Reading Comprehension and Mathematics, as well as a 15-minute Creative Writing task.

Practice tests are available for purchase at: www.edutest.com.au

Cost: The testing is \$99.00, payable directly to Edutest at the time of registration.

To register and pay: Access the website: aus.edutest.com.au/D/?t=ST4X4G93



Please use QR code to access further information and the SEAL application form.

SPORTING PATHWAY PROGRAM

WHAT THE SPP PAYMENT INCLUDES:

- 40 week specialised program.
- Specialised coaching sessions in chosen sport conducted by qualified coaches with accreditation and Working with Childrens Checks. College staff will also be present at all training sessions.
- Three periods per week of strength and conditioning sessions. Programs are designed and delivered by qualified Strength and Conditioning Coach in the High-performance centre.
- Exclusive access to the High-performance centre for practical classes. The HPC is home to the school's cardio (spin bikes, rowing ergs, treadmill) and resistance training equipment (free weights, TRX trainers, squat racks, resistance bands).
- Cardio Enhancement sessions conducted and supervised by qualified instructors and qualified Strength and Conditioning Coach, Warrnambool College staff will be in attendance at all sessions.
- Testing is performed at school every term.
- Planned excursions to Federation University.
- Access to a qualified Sport Physiotherapist – assessment and advice given to injured athletes.
- Access to online wellness TeamBuildr program.

Cost: Cost of the program for 2026 was \$975. There is a payment plan available for all families. A 50% deposit is due in Decemember via Compass.

Please Note: All other school fees must be paid before a student can take their place in the SPP. The SPP uniform is purchased through LOWES and is separate to the \$975 payment.



Please use QR code to access further information and the SPP application form.



OUR ACADEMIES

AT WARRNAMBOOL COLLEGE WE PROMOTE PARTICIPATION, CONNECTION AND A SENSE OF BELONGING. TO SUPPORT THIS OUR STUDENTS HAVE THE OPPORTUNITY TO BECOME PART OF A VARIETY OF ACADEMIES ON OFFER.

By engaging in an Academy, we aim to develop each individual's skills, performance, team spirit and knowledge so that students are well-equipped to positively contribute to the Warrnambool community.

The encouragement, guidance and coaching provided within Academies sees students through junior, intermediate and senior levels across competitions inside and outside of school. Our Academies' culture is strong, with our students proud to wear the Bullant Academy uniform.

"Science Academy is so interesting, we learn so much and get to do really cool experiments." – Oliver, Yr 8

There is a small fee applicable with each Academy. This covers associated costs for each Academy which may include: a Bullants uniform (usually a top which can be worn as part of the school uniform), a subsidised excursion and specialised training/practice at lunchtime or after school.

THE COLLEGE OFFERS A VARIETY OF COLLEGE ACADEMIES, THAT MAY BE SUBJECT TO CHANGE, INCLUDING:

- Art
- Australian Rules Football
- Basketball
- Fishing
- Music
- Netball
- Performing Arts
- Science
- Soccer
- Table Tennis
- Table Top Games
- Tennis
- Volleyball



"In Performing Arts Academy we have a lot of fun rehearsing & putting on plays." – Bella, Yr 8



INDIGENOUS PERSPECTIVES

We celebrate our Indigenous heritage via collaboration with local Indigenous personalities which includes collage, printmaking, weaving, painting, product design and ceramics. Additionally, the sharing of local knowledge of language and culture has allowed students to have the opportunity to embed the voices of our first nations people within the curriculum.





CONNECTION TO THE ARTS

Our comprehensive program is dedicated to nurturing enjoyment in The Arts. In addition to our school musical, music showcases and art exhibitions, we work hard to nurture talents, practice to perfection and create unforgettable experiences for every student.

Our extensive co-curricular Arts program includes:

- Senior and Junior concert bands
- Instrumental ensembles
- Vocal ensembles
- Soul band
- Senior and Junior rock bands
- Stage and production bands
- Jazz combo
- Drama productions
- Visual arts
- School musical production
- Public speaking and debating
- Class clowns
- Art and media exhibitions

YEAR 7 SEAL BAND

Students in the SEAL class in 2027 will learn an instrument as part of their music class in a semester. As this is part of their curriculum they are not required to pay instrument hire or the band levy. If they decide to continue learning their instrument after the class concludes at the end of the semester, please notify their teacher and the Band Director and the fees will be charged to your school account.

INSTRUMENTAL MUSIC

If your child is interested in learning a musical instrument in 2027, we have a number of instruments available for tuition. Learning a musical instrument is a great way to meet students from all year levels, help develop leadership and teamwork skills. A form at the back of this booklet provides further information.

Tuition is currently available for the following instruments: Clarinet, Flute/Piccolo, Alto Saxophone, Tenor Saxophone, Trumpet, Trombone, Tuba, French Horn, Euphonium, Drums/Percussion, Voice and Guitar.

PRACTICAL CONTRIBUTIONS ON YOUR INSTRUMENT OF CHOICE

It is expected that once students have had one semester of lessons they commit to playing in an ensemble and attending rehearsals once a week. This is about being involved and having a go whilst experiencing playing within a band. Students in any of the music programs will have the opportunity to meet new friends and learn to play an instrument in a group environment.

“I love learning an instrument and playing in the band, I have made so many new friends who share my passion for music.”

– Annabelle, Yr 8

NGATANWARR*

*PEEK WHUURRUUNG/MAAR NATION

WARRNAMBOOL COLLEGE HAS A SIGNIFICANT AND PROUD INDIGENOUS STUDENT POPULATION. AS WITH MANY REGIONAL TOWNS, OUR INDIGENOUS STUDENTS' ANCESTRIES COME FROM MANY AND VARIED CLANS AND PLACES IN AUSTRALIA. WE VALUE AND CELEBRATE THE RICH HISTORY OF THE TRADITIONAL CUSTODIANS AND THE CONNECTIONS TO COUNTRY.



Our College takes great pride in creating a culture that promotes pride in our rich local indigenous history and we rigorously weave this pride into the fabric of the whole school culture. We dream of our indigenous students as future leaders and encourage them to be the change they want to see. By the time they graduate we want them to be strong and proud of who they are and have the skills to be successful.

We instil the value of education and provide the following programs to reinforce this:

- Academic tutoring/scholarship applications.
- A Homework Centre.
- Mentoring support.
- Support with career pathway planning.
- Celebrations of key events.
- Extracurricular programs such as healthy lifestyle programs.



SUPPORTING CULTURE & CONNECTION THROUGH POSITIVE, ENGAGING ACTIVITIES.



CLONTARF ACADEMY

The Clontarf Foundation exists to improve the education, discipline, self-esteem, life skills and employment prospects of young Aboriginal men. By doing so it equips them to participate more meaningfully in society.

The Warrnambool Clontarf Academy engages the students by implementing a diverse range of in-school and extra-curricular Academy activities planned within the focus areas of education, leadership and life skills, employment, healthy lifestyles and football. Warrnambool College provides the academic education program and Clontarf provides the mechanism to engage the boys into the school environment.

This is an engagement program. The strong bond and mutual respect between the students and Academy staff are pivotal to the achievement of outcomes for the students.

The program enables the development of self-esteem and positive attitudes towards health, education and employment through exposing participants to a wide range of life experiences that challenge and develop their aspirations. We use sport and other experiential learning to engage the students in an environment that is welcoming, safe and supportive, allowing the development of confidence and improved educational performance.

We find employment, training and study options for our graduates. We assist in all aspects of preparing for work and we support students through the transition from school to work. Our Academy and employment staff work with employers to develop the necessary mentoring and support particularly during each graduate's first year at work.



STARS FOUNDATION

Stars Foundation's mission is to support and enable Aboriginal and Torres Strait Islander girls and young women to make active choices towards realising their full potential in all aspects of their development and wellbeing. Stars Foundation is a values-based organisation. The four core values — Respect, Honesty, Commitment, Pride — inform the program model and underpin everything.

Stars provides a holistic program that supports Indigenous young women to attend and remain engaged at school, complete year 12 and move into work or further study. The aim of the program is to empower young women through the improvement of health and educational outcomes.

The dedicated Stars room supports these young women to build strong, trusting relationships in a culturally safe environment where they feel nurtured and inspired. Mentors provide a diverse range of activities to support and help develop self-esteem, confidence, and life skills needed to successfully participate in school and transition into a positive and independent future. The students in Stars can access the intensive support they need, when they need it.





OUR VALUES OF RESPECT,
RESILIENCE & RESPONSIBILITY
GUIDE STUDENTS TO ACT WITH
INTEGRITY, PERSIST THROUGH
CHALLENGES & CONTRIBUTE
POSITIVELY TO THEIR COMMUNITY.

OUR VALUES



RESPECT

We recognise that every person, every role and every story in our community matters. This shapes how we teach, how we learn and how we connect. Through this, we are able to build a culture of safety, belonging and pride where every student, staff member and family feels heard and valued.



RESILIENCE

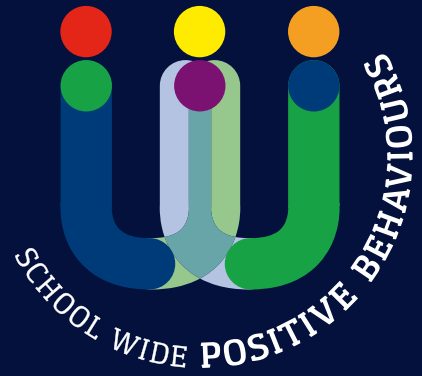
At Warrnambool College, resilience is about perseverance and adaptability. We support students to take risks, learn from mistakes and develop strategies to overcome obstacles. Together, we celebrate progress, not perfection, and create an environment where setbacks are recognised as stepping stones to success.



RESPONSIBILITY

At Warrnambool College, responsibility is about making thoughtful choices, owning our actions, and acting with integrity. We encourage students to follow through on commitments, take initiative and contribute to a safe and supportive school community.

SCHOOL WIDE POSITIVE BEHAVIOUR



School-Wide Positive Behaviour Support (SWPBS) is embedded into our instructional practices to create a safe, structured and inclusive learning environment. This evidence-based framework establishes clear, consistent behaviour expectations across all learning areas, ensuring that every student understands how to engage positively in their education.

By explicitly teaching expected behaviours, reinforcing positive actions and fostering a culture of respect, responsibility and resilience, SWPBS creates predictable and supportive classroom environments where students can focus and thrive. The successful implementation of SWPBS ensures positive student conduct and engagement, translating into more effective learning and enhanced academic outcomes.

Tier 1 strategies form the foundation of our behaviour management approach. These universal strategies include explicit instruction on expected behaviours, consistent reinforcement of positive actions and clear communication of both behavioural and academic expectations, ensuring that all students benefit from a supportive framework. Reinforcement of expectations is used to encourage the repetition of desired behaviours and to support students to meet our high expectations.

A key component of our Tier 1 approach is the Positive Reward Points (PRP) system, which recognises and celebrates student efforts that reflect our core values. By integrating the PRP system into our daily routines, we provide immediate positive feedback, reinforcing desired behaviours and fostering a culture of success.

As a whole-school approach, Tier 1 strategies ensure positive behaviours are taught, consistently reinforced and seamlessly woven into daily learning experiences. In the classroom, we incorporate a variety of strategies to foster engagement, accountability and meaningful learning.

Our lessons are designed with clear learning intentions, success criteria, behaviour expectations and differentiation to address diverse learning styles and needs. Additionally, we implement well-structured activity sequences, academic choice and flexible entry and exit points for assessment to ensure all students are being appropriately challenged. This framework ensures a supportive and continuous learning environment.

**CLEAR EXPECTATIONS &
POSITIVE REINFORCEMENT
CREATE SAFE, FOCUSED &
SUCCESSFUL LEARNERS.**

SWPBS BUILDS SAFE, STRUCTURED CLASSROOMS FOR STUDENTS.



BEHAVIOUR EXPECTATIONS



**WE ARE
RESPECTFUL**

AT ALL TIMES

- We follow staff instructions.
- We use calm and kind words and actions.
- We maintain personal space, keeping our hands and our feet to ourselves.
- We clean up after ourselves.



**WE ARE
RESILIENT**

- We identify and regulate our emotions.
- We learn from our mistakes and accept the consequences of our actions.
- We use positive self talk.



**WE ARE
RESPONSIBLE**

- We wear the correct uniform.
- We move between spaces in a calm and safe way.
- We follow entry and exit routines in all spaces.

LEARNING SPACES

- We take turns and listen to the speaker.
- We allow everyone to learn.
- We participate and cooperate in class activities.

- We ask for help and help others.
- We try, and are engaged in our classwork.
- We ask for and act on feedback.

- We bring our equipment and arrive on time, ready to learn.
- We use devices and equipment only when instructed.
- We complete tasks on time.

THE YARD

- We follow the rules in each school space.
- We put rubbish in bins.
- We use designated pathways.

- We are upstanders, we report unsafe behaviours.
- We solve problems calmly and fairly.
- We take turns and play safely.

- We stay within school boundaries.
- We look after equipment and use it in the correct space.
- We move to lockers and classes when the music starts.

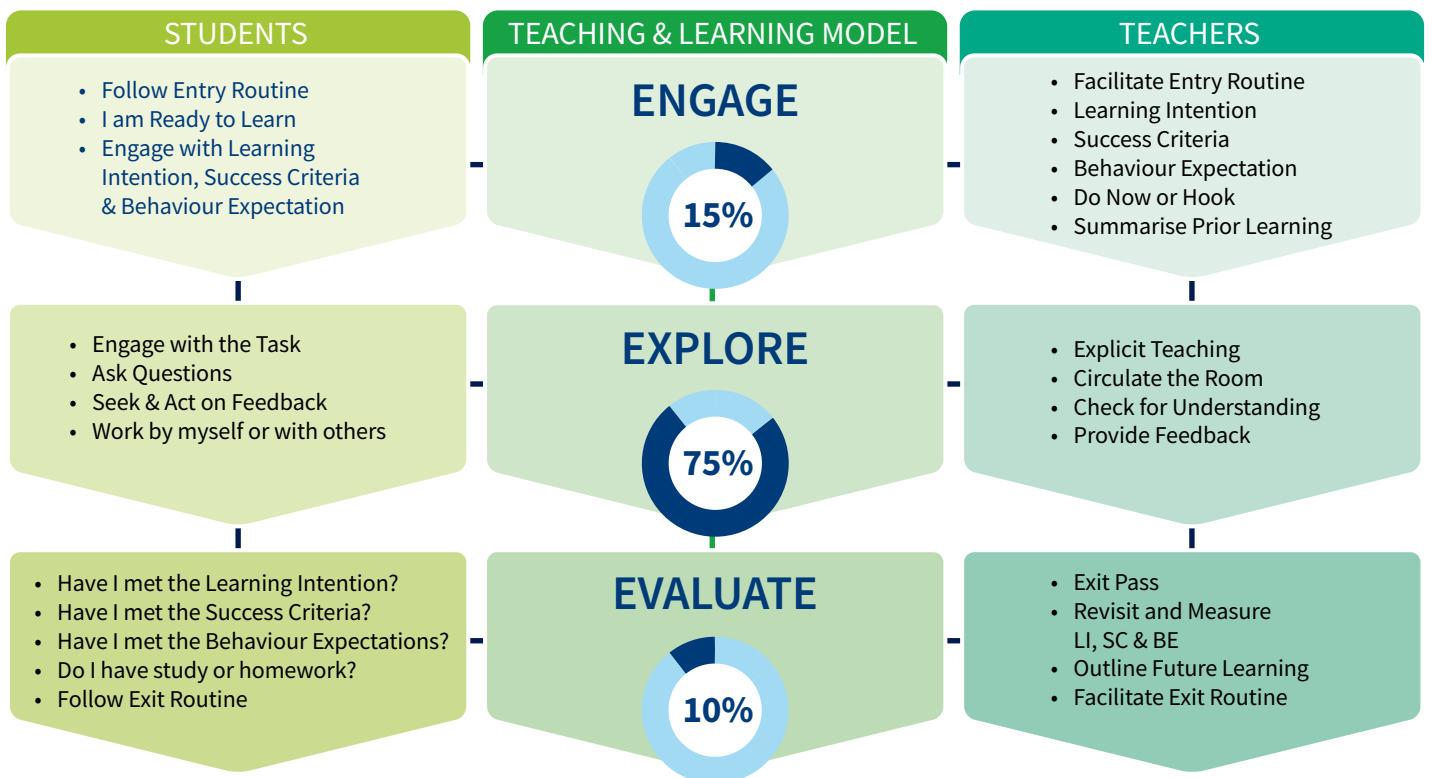


OUR INSTRUCTIONAL MODEL:

A consistent approach to teaching & learning

High-quality teaching forms the foundation of our students' success. Our Instructional Model provides a clear framework for engaging students, delivering impactful lessons and assessing learning effectively.

Grounded in evidence-based strategies, it ensures that every student experiences consistent, structured and engaging learning opportunities across all subjects. Our Instructional Model is structured around three phases: Engage, Explore and Evaluate. Each phase integrates best-practice teaching strategies, behaviour support frameworks and student engagement approaches to ensure high-impact learning experiences.



- 1
Setting Goals
- 2
Structuring Lessons
- 3
Explicit Teaching
- 4
Worked Examples
- 5
Collaborative Learning
- 6
Multiple Exposures
- 7
Questioning
- 8
Feedback
- 9
Metacognitive Strategies
- 10
Differentiated teaching

OUR TEACHING & LEARNING MODEL



ENGAGE

Creating the conditions or learning

We build emotionally safe, structured beginnings to every lesson. Through routines, clarity and connection, students feel ready, focused and motivated to learn.



EXPLORE

Deepening student understanding

Students build knowledge through explicit teaching, guided practice and scaffolded challenges. Learning is active, inclusive and tailored to support deep understanding.



EVALUATE

Reflecting on progress and growth

Students reflect, receive feedback and set goals. Evaluation is about more than marks - it is about building confidence, resilience and taking ownership of learning.

ENGAGE

CREATING THE CONDITIONS FOR LEARNING

We create an environment where students feel valued, supported and ready to learn. Each lesson begins with clear purpose, expectations and direction so students feel confident to engage and take on challenges.

UNIVERSAL STRATEGIES FOR TEACHING & LEARNING

- Structured lesson openings: Consistent entry routines, check-ins and clear behaviour expectations create stability and a positive start.
- Clear expectations: We explicitly teach learning intentions, success criteria and behaviour expectations so students know what they are learning, why it matters and how to succeed.
- Activate prior knowledge: Retrieval tasks, inquiry questions and discussion connect new learning to what students already know.
- Active participation: Strategies such as cold calling, hinge questions and visible responses ensure all students are involved.
- Proactive classroom management: Active supervision, non-verbal cues and trauma-aware practices maintain a calm, safe learning environment.

EMOTIONAL READINESS FOR LEARNING

- Build connection: Relationship strategies help students feel safe, supported and ready to learn.
- Support regulation: Co-regulation and brain breaks help students sustain focus and energy.
- When students feel safe and prepared, they engage deeply, take risks and build confidence, motivation and resilience.





EXPLORE

DEEPENING STUDENT UNDERSTANDING THROUGH EFFECTIVE TEACHING

The Explore phase is where students actively engage with new ideas, build knowledge and strengthen critical thinking. Learning is made visible, interactive and accessible through purposeful scaffolding and meaningful challenge, ensuring all students are supported while developing deep understanding and growing independence.

UNIVERSAL STRATEGIES FOR TEACHING & LEARNING

- We use explicit instruction and scaffolding: Breaking down complex ideas into step-by-step explanations, guided practice, and structured questioning.
- We gradually release responsibility to students: Moving from teacher-led instruction to independent learning, ensuring students gain confidence before working autonomously.

- We promote collaborative learning: Engaging students in structured problem-solving, peer discussions and learning tasks.
- We provide multiple opportunities for practice: Using modelled instruction, guided practice and independent tasks to reinforce key concepts.
- We differentiate instruction: Adjusting support, scaffolds and expectations based on real-time student needs, ensuring all learners can access and succeed in learning.
- We enable student voice: Embedding choice-driven tasks, movement-based activities and scaffolded challenges to sustain engagement and motivation.

BUILDING LEARNING STAMINA & ENGAGEMENT

- We integrate structured brain breaks: Helping students sustain focus and learning stamina.
- We reinforce the power of a Growth Mindset: Teaching students that effort, persistence and resilience are key to success.



EVALUATE

REFLECTING ON PROGRESS & IDENTIFYING NEXT STEPS

The Evaluate phase ensures that students consolidate learning, reflect on progress and plan for continuous growth. This phase reinforces that learning is not just about getting things right - it's about continuous improvement and resilience.

UNIVERSAL STRATEGIES FOR TEACHING & LEARNING

- We facilitate student reflection through structured routines: Encouraging students to assess their progress against the Learning Intentions and Success Criteria.
- We provide clear, meaningful feedback: Using verbal, written and peer feedback loops to ensure students understand what they have achieved and where they can improve.
- Guide students in setting personalised learning goals: Reinforcing that learning is an ongoing process of challenge and improvement.

- We reinforce self-reflection and student voice: Embedding guided self-assessment, self-monitoring, goal setting and strengths-based feedback to build student confidence.
- We ensure assessment informs future learning: Using formative and summative assessment strategies to identify student strengths and next steps.

FOSTERING GROWTH & REFLECTION

- We reinforce self-efficacy through guided reflection and strength-based goal-setting: Helping students build resilience and self-belief.
- We reframe mistakes as opportunities for growth: Ensuring students see learning as a continuous journey of improvement.

When students reflect on their learning and see tangible progress, they develop confidence, ownership and the skills needed for future success. The Evaluate phase reinforces a culture of continuous growth, goal-setting and resilience.

YOUR DAY @ WARRNAMBOOL COLLEGE

The school day is divided into six periods. Two breaks during the day include a shorter recess break and a lunch break in the afternoon. During these times the school canteen is open, with a range of hot and cold food available for purchase. Students have access to all open area spaces during these breaks, with no separation for year levels. Various Academies also use these times to run practice sessions and activities.



CONNECTED & INCLUSIVE

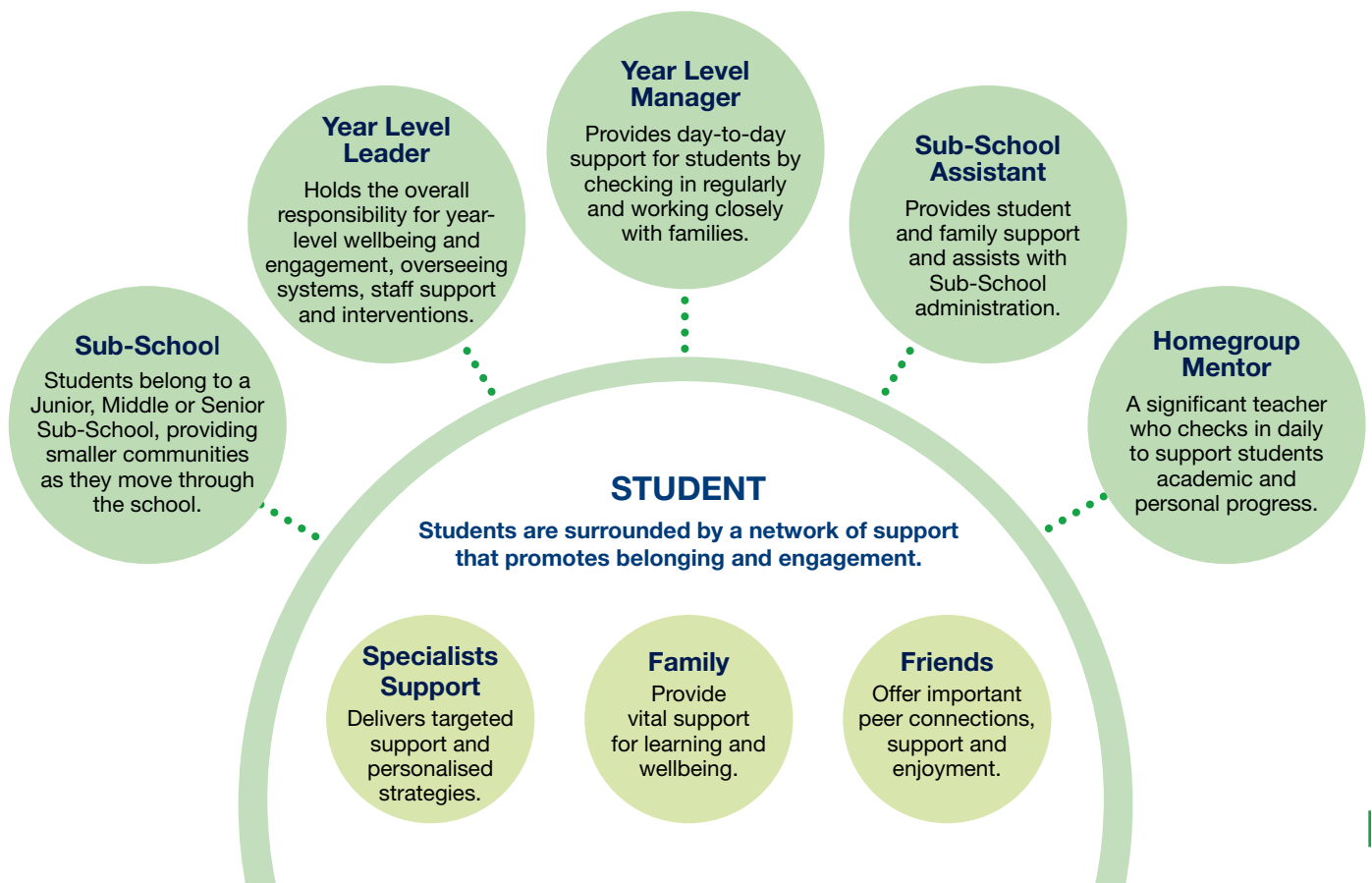
AT WARRNAMBOOL COLLEGE, WE KNOW THAT ENGAGEMENT AND INCLUSION ARE CENTRAL TO STUDENT SUCCESS. WHEN STUDENTS FEEL KNOWN, SUPPORTED AND CONNECTED, THEY ARE MORE CONFIDENT IN THEIR LEARNING.

Our structures are intentionally designed to foster strong relationships, provide targeted support and create a genuine sense of belonging. Through a carefully layered approach to wellbeing, leadership and community involvement, we ensure every student is supported not only academically, but socially and personally throughout their journey with us.

Our year level structure is organised into sub-schools - Junior School (Years 7-8), Middle School (Years 9-10) and Senior School (Year 11-12). This approach ensures every student is known, supported and connected throughout their time with us.

Within each sub-school, each year level has a dedicated Year Level Leader and a Year Level Manager. Together with a sub-school assistant, these teams focus on monitoring student engagement and providing both academic support and personal development guidance. Each sub-school also offers a sense of community, where students collaborate, celebrate achievements, establish traditions and explore leadership opportunities. In addition, each sub-school partners with a local charity, giving students meaningful ways to contribute through volunteering and fundraising.

As another layer of support, students start each day in a homegroup led by a significant teacher, a staff member who knows them best and serves as their primary point of contact. These sessions have a pastoral care focus, centring on wellbeing, connection and readiness for learning. Each student and member of staff is also part of a House - Belfast, Childers, Flagstaff, Hopkins, Logans and Merri - with each House named after a significant local geographical area. Through their involvement in a variety of annual competitions, students are recognised for their effort and achievements.





CULTURAL DIVERSITY

We are committed to creating an environment where all students feel valued, heard, and supported — regardless of their cultural background, identity, or lived experiences. Our school culture continues to evolve, shaped by the voices and experiences of our students, staff, and wider community.

We recognise that cultural inclusivity is an ongoing journey and are dedicated to continuous learning and improvement. In consultation with the Centre for Multicultural Youth, Safe Schools Victoria, and Koorie Engagement Support Officers, we provide ongoing professional learning for staff to strengthen cultural understanding in the classroom. We regularly review policies and gather student feedback to ensure we remain responsive to the needs of all learners, and support student-led initiatives that celebrate identity and culture while fostering respect, understanding, and a strong sense of belonging.

BY FOSTERING CULTURAL APPRECIATION & REPRESENTATION, WE CREATE A STRONGER SENSE OF BELONGING FOR STUDENTS FROM DIVERSE BACKGROUNDS.

GLOBAL PARTNERSHIPS & MULTICULTURAL LEADERSHIP

Warrnambool College is committed to broadening students' worldviews and preparing them for a globally interconnected world, with a strong focus on multicultural engagement, student leadership, and cultural exchange. Through international partnerships in Indonesia and France, students participate in study tours and cultural exchange programs, gaining first-hand experience of different cultures and developing intercultural understanding and global citizenship.

We also host an International Student Program, welcoming students from around the world, which creates valuable opportunities for our local students to connect with international peers and develop cross-cultural relationships. Within this program, students set annual goals and priorities and engage in structured leadership development, including workshops with the Centre for Multicultural Youth, as well as community-based learning through excursions, environmental projects, and cultural exchange activities.

Students are empowered to build leadership skills through goal-setting and teamwork, foster cross-cultural understanding by celebrating diverse traditions, and lead student-driven projects and initiatives that promote multicultural awareness and inclusion. These experiences enable students to actively contribute to our school community while developing a global perspective and strong sense of connection.

CULTURAL CELEBRATIONS & WHOLE-SCHOOL INCLUSION

Cultural appreciation is more than just recognition - it is about active participation, learning, and reflection. Throughout the school year, our students plan and run whole school assemblies and events to help celebrate key cultural events. Through these events, students are able to provide the school community with opportunities to engage, learn and reflect on the importance of diversity and inclusion.

- Harmony Day: A school-wide celebration of multiculturalism and diversity through cultural dress, traditional food, storytelling and performances.
- NAIDOC Week: Honouring Indigenous culture and reconciliation with traditional dance and art being embedded into students' learning activities.
- RU OK? Day: Students lead discussions on mental health and wellbeing.
- International Day Against Homophobia, Biphobia, and Transphobia: Promoting inclusivity, respect and awareness of LGBTIQ+ rights.
- International Women's Day: Recognising the achievements of women and promoting gender equality through discussions and acknowledgements of influential women.
- International Men's Day: Encouraging positive role models and conversations around men's well-being, mental health and contributions to society.
- International Day of Persons with a Disability: Raising awareness and promoting inclusion through activities that celebrate the achievements and contributions of people with disabilities.

By actively involving students in planning and leading these events, we ensure that cultural diversity is embedded into school life, creating a welcoming and inclusive environment for all.



LGBTIQ+ SUPPORT & INCLUSION

LGBTIQ+ INCLUSION AT WARRNAMBOOL COLLEGE EXTENDS BEYOND INDIVIDUAL SUPPORT – IT STRENGTHENS OUR ENTIRE SCHOOL COMMUNITY.

We are committed to fostering a school culture where every student feels safe, valued and respected. We recognise that when LGBTIQ+ students experience a strong sense of belonging, they are more likely to thrive academically, socially and emotionally. Through Safe Schools education, advocacy and visibility, we ensure that diversity is not just acknowledged — but embraced.

Our Rainbow Club provides a safe and supportive space for students to connect, build friendships and advocate for inclusivity within the school. Students lead discussions, organise awareness campaigns and contribute to whole-school events that strengthen diversity. Alongside student-led initiatives, we provide staff training, inclusive curriculum representation and access to external support networks, ensuring that every student has the opportunity to learn, grow and express their authentic selves with confidence.



OUR FOCUS IS ON
DEVELOPING THE
WHOLE STUDENT
— ACADEMICALLY,
SOCIALY AND
EMOTIONALLY.



STUDENT WELLBEING



THE WELLBEING CENTRE

The Wellbeing Centre is staffed by a team of experienced, motivated, compassionate and friendly staff, who collaboratively work with students, their families, school staff and external providers to enhance the wellbeing of all. The team includes a Mental Health Practitioner and a School Nurse.

The Wellbeing space comprises:

- A ‘triage’ reception to assess students’ immediate needs, whether that be sickbay or a wellbeing referral to a team member.
- A lounge area offering students a quiet, safe space to sit and regulate emotions to get back to class or to access during break times with peers.
- Four individual counselling rooms that provide a safe space for external services to access and for private conversations at students’ request.
- A kitchen that enables us to provide breakfast, or toasties for students that need a little extra to get through the day.
- A classroom space for group activities, lunchtime activities, and for use by external agencies providing health promotion information.

The Wellbeing team provide a supported, safe space in which students can build resilience, confidence, nurture positive relationships and grow pro-social skills.

A Big Life is a partnership between the Warrnambool Student Wellbeing Association (WSWA), Warrnambool College and Brauer College. The program aims to proactively address the social and emotional wellbeing of young people by implementing quality programs at school, connecting with families and communities and providing professional development for staff.

INCLUSIVE EDUCATION TEAM

All students are welcomed and supported at Warrnambool College to reach their full potential. The Inclusive Education team supports students who are funded under the Disability Inclusion model plus supporting all students with additional learning needs.

Inclusive Education staff attend classes to provide individualised student supports with respect to academic, behavioural, and social-emotional needs. This support may comprise modelling and mentoring, supporting adjustments to learning tasks, support for excursions, camps and a variety of health and wellbeing needs. These adjustments are provided in accordance with the student and parent involvement.

In 2025 the Department changed how schools support students with disabilities and additional needs. The Disability Inclusion program uses internal and external specialist support to help school staff respond to the needs of students with disabilities. Educators build partnerships with families to set goals and to create individual education plans for students.

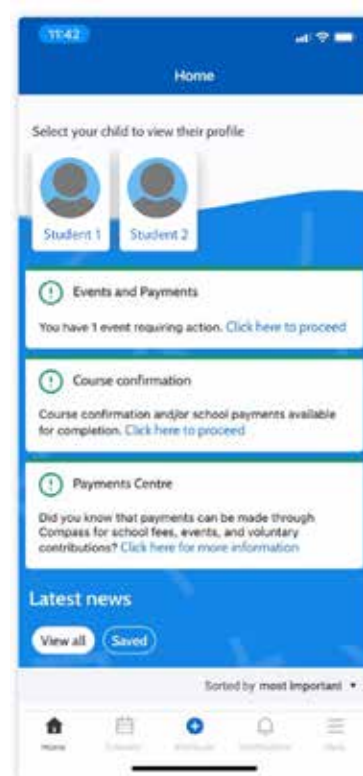
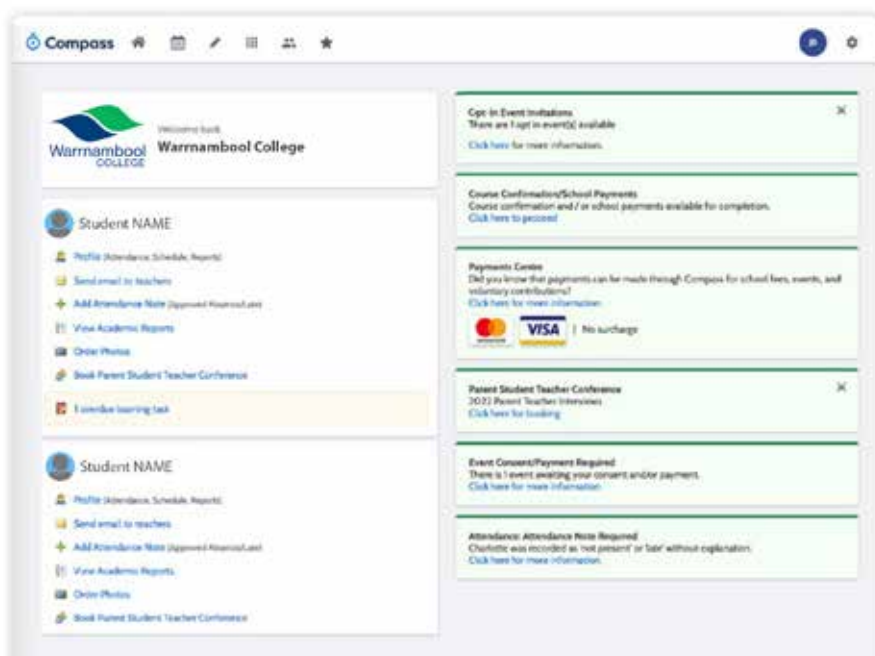


OUR FLEXIBLE
UNIFORM REFLECTS
OUR COMMITMENT
TO INCLUSIVITY,
COMFORT & STUDENT
WELLBEING.

COMPASS ONLINE COMMUNICATION

Warrnambool College uses an online tool to enhance communication between parents/ guardians, students and the school. This tool – **Compass**, is web based, which means that it can be accessed using any internet-enabled device.

The Compass website is a secure portal which allows access only to registered users. Parents/guardians receive a single login which allows them to access information about all of their children that attend Warrnambool College. An example of how your Compass home screen would appear is shown below.



COMPASS ALLOWS PARENTS/GUARDIANS TO:

- Check their child's attendance at school. This includes being able to approve absences, and receive text messages when their student is absent without approval.
- Monitor their child's progress at school. Student reports are available online, and Parents/Guardians can see ongoing information on achievement, behaviour or other comments logged by teachers.
- See their child's timetable and any upcoming changes, view newsletters, bulletin notices and receive text message notification about important news items.
- Contact any of their child's teachers via email about concerns they may have.
- Book interview times for Parents/Guardians/ teacher/student conferences.
- View their child's assessment tasks, due dates, submitted work and resources to support student learning.
- View regular academic feedback from teachers.
- Consent and pay for students excursions and activities.
- Pay school fees (including the potential for payment plans over a 6 month period).



iPad/MacBook DEVICE REQUIREMENTS

The Warrnambool College Device policy is designed to enable all students to have access to appropriate technological resources in all their classes. We want all our students to have access to the same learning devices in all our classrooms, which is why our policy requires all year 7-9 students to have their own iPad or MacBook to use at school each day.

Student devices are connected to the College computer network so that all students are able to safely access online resources via our filtered internet.

Before purchasing a device, we recommend you read the school device policy as it outlines the key software that is accessed by students to support their learning and provides suggestions for how to access discounts on device purchases.

The device policy requires Year 7 students with an iPad to have a physical bluetooth enabled keyboard.



Further information on our device policy can be found via QR code.

BUS TRANSPORT TO SCHOOLS GUIDELINES FOR ELIGIBILITY

COUNTRY BUS TRAVEL

In Victoria, the School Bus Program provides transport for rural/regional students, primarily for those living 4.8 km or more from their nearest school. Free travel applies to eligible students, while others may pay a fare if seats are available.

Please contact the Bus Coordinator at Brauer College on 5560 3888 to discuss whether a Country bus service is available, how this can be arranged and the relevant costs for this service.

TOWN BUS TRAVEL

For Town bus services, please contact Warrnambool Bus Lines ON 5562 1866.

COSTS AT WARRNAMBOOL COLLEGE

CURRENT SUBJECT & CAMP CHARGES

Our charges for 2026 are listed below. School Council will be reviewing our contributions for 2027.

	Curriculum Contributions	Essential Incursions /Excursions	Total for the year
Year 7	\$450	\$200	\$650
Year 8	\$450	\$200	\$650
Year 9	\$450	\$200	\$650
Year 10	\$450	\$200	\$650
Snr School	\$450	\$200	\$650
VM	\$450	\$200	\$650
Wave	\$140	\$100	\$240

Please note: At Warrnambool College we have minimal booklists for students in Years 7, 8 and 9. This allows families to purchase the required device.

CURRENT SUBJECT & CAMP CHARGES

At Year 7 these costs cover items including:

- Student ID Card
- English readers notebook
- Goggles, hair net, earphones, apron, protective eye wear.
- Classroom consumables, materials and equipment.
- Online subscriptions.
- Printing and photocopying of class materials and learning materials.
- Whole school events (swimming and athletics carnivals).

For those parents in possession of a Health Care Card, you are able to use your Camps, Sports and excursion funds to pay for the incursions/excursions portion of the charge. Please inform us if this is your preference or if you would prefer to use it for the camps program.

CAMP COSTS

Camp costs are payable at the time of the camp, a separate event will be posted on Compass when payment is due. An example of our current camps programs, together with the 2026 cost is below. There may also be subject specific excursions throughout the year, though these are at minimal cost.

Year	Cost - GST free (Activities)	Cost - GST free (Catering)	Total Cost
7	\$305	\$125	\$430

Year 7 camp runs during Term 1.



PARENT PAYMENTS POLICY

ONE PAGE OVERVIEW



FREE INSTRUCTION

- Schools provide students with free instruction and ensure students have free access to all items, activities and services that are used by the school to fulfil the requirements of the Curriculum. This includes the Victorian Curriculum F-10, the Victorian Certificate of Education (VCE) including the VCE Vocational Major and the Victorian Pathways Certificate.
- Schools may invite parents to make a financial contribution to support the school.



PARENT PAYMENT REQUESTS

Schools can request contributions from parents under three categories:

Curriculum Contributions

Voluntary financial contributions for curriculum items and activities which the school deems necessary for students to learn the Curriculum.

Other Contributions

Voluntary financial contributions for non-curriculum items and activities that relate to the school's functions and objectives.

Extra-Curricular Items and Activities

Items and activities that enhance or broaden the schooling experience of students and are above and beyond what the school provides for free to deliver the Curriculum. These are provided on a user-pays basis.

- Schools may also invite parents to supply or purchase educational items to use and own (e.g. textbooks, stationery, digital devices).



FINANCIAL HELP FOR FAMILIES

- Schools put in place financial hardship arrangements to support families who cannot pay for items or activities so that their child doesn't miss out.
- Schools have a nominated parent payment contact person(s) that parents can have a confidential discussion with regarding financial hardship arrangements.



SCHOOL PROCESSES

- Schools must obtain school council approval for their parent payment arrangements and publish all requests and communications for each year level on their school website for transparency.

WARRNAMBOOL COLLEGE SCHOLARSHIPS

A WARRNAMBOOL COLLEGE SCHOLARSHIP IS AN INCENTIVE TO PROMOTE INVOLVEMENT IN OUR SCHOOL ACADEMIC AND EXTRACURRICULAR PROGRAMS.

A scholarship at Warrnambool College offers students the opportunity to experience outstanding curriculum opportunities and physical resources. At Warrnambool College we have high expectations of our students. A wide educational perspective encourages them to discover, pursue and fulfil their individual interests, while equipping them with essential thinking and communication skills. Warrnambool College students are well prepared to take charge of their future and become active and productive members of the community.

We have 7 x \$500 scholarships available to Year 6 students enrolling at Warrnambool College in 2027.

LEADERSHIP SCHOLARSHIP

This scholarship is available to students who have demonstrated leadership skills and potential in a variety of settings. Successful applicants will demonstrate an outstanding work ethic, have been supportive of other students and have fully participated in the life of their school.

ACADEMIC EXCELLENCE SCHOLARSHIP

This scholarship is available to students with an exemplary academic record and who have demonstrated outstanding application, aptitude, achievement and a strong performance in general studies.

SPORTS SCHOLARSHIP

This scholarship is available to students who have demonstrated outstanding sporting skills and potential. Successful applicants will also have demonstrated a strong work ethic and a preparedness to participate fully in the life of the school.

COMMUNITY SERVICE SCHOLARSHIP

This scholarship is available to students who have a commitment to community involvement and service to others. Successful applicants will also have demonstrated a strong work ethic and a preparedness to participate fully in the life of the school.

PERFORMING ARTS SCHOLARSHIP

This scholarship is available to students who have shown a positive commitment to the arts. This may be evidenced in the fields of public speaking, debating, theatricals, vocal and dance. Successful applicants will be expected to participate fully in the Performing Arts program at the school.

MUSIC (INSTRUMENTAL) SCHOLARSHIP

This scholarship is available to students who have demonstrated a commitment to instrumental music. This passion for music will be expected to extend to active participation in the extensive suite of band programs running within the College.

ENDEAVOUR SCHOLARSHIP

This scholarship is available to students who have shown a positive commitment to learning and involvement in their school program. We recognise that a student does not have to be the best to be working at their best. This scholarship is to support students to continue with their dedication towards their studies whilst balancing their involvement in co-curricular programs.

SCHOLARSHIP APPLICATION

APPLICATION FORM



Full Name of Student: _____

Name of Parent/Guardian: _____

Address: _____

Suburb: _____ Postcode: _____

Home phone: _____ Work: _____ Mobile: _____

Email address: _____

Name of Scholarship applied for: _____

Current Primary School: _____

Year 6 Teacher and Contact Number: _____

Student Achievements Relating to Scholarship - to be completed by student:

Please list any information which will help us assess your suitability for the scholarship. Your Year 6 teacher may be contacted for further information, and a student interview may be required later in the year.

Applications open Thursday 25th June and close Friday 24th July 2026

Please send this completed form to:

Business Manager
Warrnambool College
PO Box 442
Warrnambool Vic 3280

LEARN/HIRE a Musical Instrument

APPLICATION FORM



PLEASE RETURN TO SCHOOL OFFICE BY MONDAY 14th SEPTEMBER 2026

Full Name of Student: _____

Name of Parent/Guardian: _____

Address: _____

Suburb: _____ Postcode: _____

Home phone: _____ Work: _____ Mobile: _____

Email address: _____

Primary School attended: _____

Can student read music? YES NO

Please refer to the information on the College website for what instruments are taught and can be hired from Warrnambool College. Students wishing to learn voice, piano or own their own instrument do not need to apply for instrument hire.

If you currently own a musical instrument and are applying to have lessons only, please list the type of instrument you have and the length of time you have been learning (if you have had lessons before):

INSTRUMENT HIRE

The College has a wide range of instruments available to hire. Students can hire these instruments on the understanding that they participate in the band program. As there are limited numbers of each instrument, if a student misses more than three rehearsals in one term the student will be dismissed from the program.

If you would like to hire an instrument from the College, please list them in order or preference.

1. _____
2. _____
3. _____

I give permission for my child to undertake instrumental lessons. I have read and understand the fees and conditions associated with this program.

Parent/Guardian Signature: _____ Date: _____



GET INVOLVED IN EXTRACURRICULAR ACTIVITIES

IMPROVED ACADEMIC PERFORMANCE

Studies have shown that students who participate in co-curricular activities have a marked improvement in their grades. This can be attributed to skills they learn such as better time management to accommodate their hobbies and class activities, better organisational skills, and a boost in their self-esteem. Skills obtained in Academies can also be applied in the classroom.

BETTER TIME MANAGEMENT SKILLS

We want our students to learn how to balance their academic life with their interests. They need to know how to incorporate their activities into their school life and allocate enough time for each.

LEARN NEW AND USEFUL SKILLS

Our students learn new skills that are useful in their school life and day-to-day activities. They learn teamwork, social skills, and critical thinking. According to studies, students who participate in co-curricular activities are found to have better leadership skills and learn how to relate better with their peers.

NEW FRIENDS

Students are encouraged to pursue extracurricular activities as it is an excellent opportunity to meet and spend time with new people, hence forming new friendships.

SENSE OF COMMITMENT

Students who participate in co-curricular activities have a sense of commitment to whatever they are involved in. When our students elect to take part in something, we want them to commit to it and give it their all; this commitment extends to all other areas of their lives.

SENSE OF RESPONSIBILITY

Involvement in co-curricular activities encourages a sense of accountability and responsibility in our students.

INTRODUCTION TO NEW ACTIVITIES

Students at our school are exposed to a wide range of new activities. Many of our past students have turned their interests into successful career paths.

MORE OPPORTUNITIES

For secondary school students, engaging in extracurricular activities boosts their chances of gaining admission into universities. Most universities nowadays check what the student offers apart from their academics, and that is where co-curricular activities come in.

WHY CHOOSE A GOVERNMENT SCHOOL

As your child prepares for the big leap to Year 7, considering which secondary school will best serve their learning and wellbeing needs is an incredibly important decision.

At Warrnambool College, we believe that every student has the right to a high-quality education that is engaging, inclusive, and purposeful. We set high expectations for our students and our staff to empower every student to thrive in our vibrant learning community.

THE HIGHEST QUALITY EDUCATION FOR ALL:

Public schools are the backbone of our nation's education system, ensuring that all students gain equal access to high quality learning. We provide opportunities for all children to succeed, no matter where they live or what their path through education is. High-quality teaching is one of the biggest factors that positively influence student learning. That's why at Warrnambool College, we focus our attention on building the capacity and skills of our staff through mentoring, peer and student feedback, and professional learning.

THE FACTS:

A 2026 review confirms that while private schools often lead in top-tier VCE scores, the academic gap is largely due to student socioeconomic backgrounds rather than teaching quality. Public schools continue to provide highly academic outcomes, often outperforming private counterparts.

THE REASONS

There are other excellent reasons to consider enrolling your child in a government secondary school. Public schools are great value for money compared to private schools. In 2026 all school bus travel is free for Government Students and CSEF Funding has increased to \$400 per child for eligible families. At Warrnambool College our focus is simple: delivering excellent teaching and learning without additional tuition fees. Families can invest in their child's extra-curricular growth and experiences, confident that they are receiving a comprehensive education aligned with state standards and accountability measures.

2026 FEES: Warrnambool area

Cohort	Warrnambool College (WC)	Catholic (Local Avg)	Independent (Local Avg)
Junior (Yr 7)	\$650	\$6,131	\$22,280
Middle (Yr 9)	\$650	\$6,131	\$25,536
Senior (Yr 12)	\$650	\$6,131	\$25,536

THE ANSWERS

- **University Success:** Data continues to show that students from public schools often achieve higher grades in their first year of university than those from private backgrounds, as they are frequently more independent learners.
- **Community Strength:** As neighborhood hubs, public schools facilitate easier social networking for both parents and students. Living within walking distance to school can ease a significant burden on busy families.
- **Real-World Diversity:** Public schools provide a safe, more diverse learning environment that better prepare students for a multi-faceted world.
- **Innovative Integrated Learning:** Our structured Year 7 transition program, Elev8 (Year 8) and Phoenix (Year 9) use inquiry-based learning to bridge the gap from primary school and build real-world skills. SPP and SEAL as well as individualised learning pathways into VCE and VCE-VM provide opportunities to give all students a fair chance to reach their full potential and lead a fulfilling life.

We are deeply connected to our local community and proud to serve Warrnambool families. Our students graduate with not only academic success, but the resilience, confidence and adaptability needed to thrive in a changing world.

**AT WARRNAMBOOL COLLEGE, EVERY STUDENT BELONGS,
EVERY PATHWAY MATTERS & EVERY FUTURE IS POSSIBLE.**



Grafton Road, Warrnambool,
Victoria 3280
T 03 5564 4444
E warrnambool.co@education.vic.gov.au
wblcoll.vic.edu.au
fb.me/wbool.college